



# MONTHLY MEMBERSHIP PROGRESS REPORT

District 22 W

Results as of: 09/30/2018

GMT: MAHESH CHITNIS

LOCATION MARYLAND

GMT CA

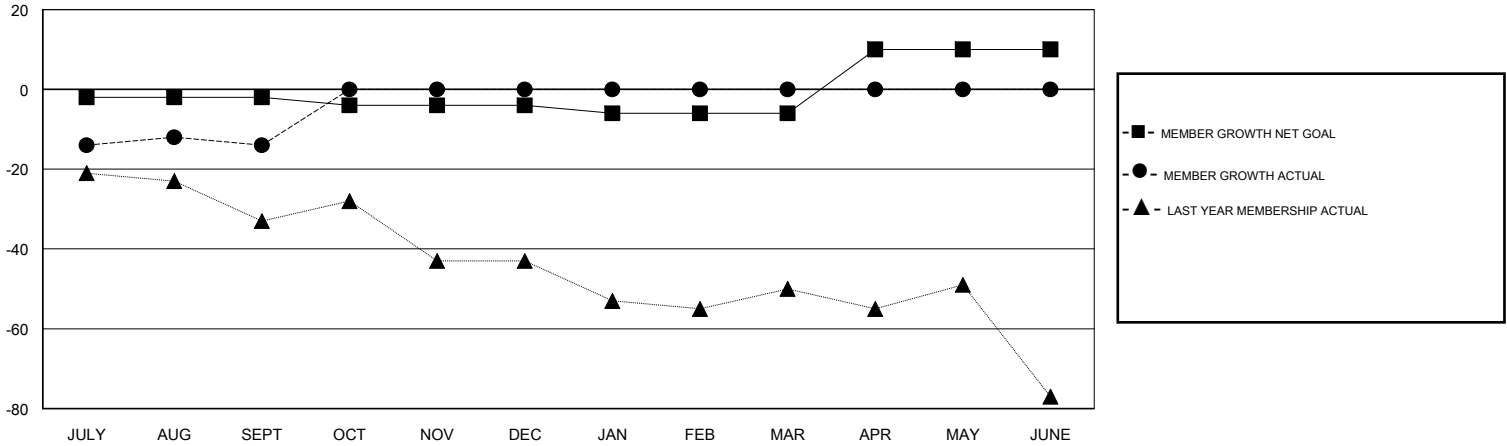
Clubs			
RESULTS FOR 2018-2019			
QUARTER	NEW CLUB GOAL	NEW CLUBS	DROPPED CLUBS
JULY/AUG/SEPT	0	0	1
OCT/NOV/DEC	0	0	0
JAN/FEB/MAR	0	0	0
APR/MAY/JUNE	1	0	0

Members			
RESULTS FOR 2018-2019			
QUARTER	MEMBER GROWTH NET GOAL	MEMBER GROWTH ACTUAL	DROPPED MEMBERS ACTUAL (including transfers)
JULY/AUG/SEPT	-2	40	48
OCT/NOV/DEC	-2	0	0
JAN/FEB/MAR	-2	0	0
APR/MAY/JUNE	16	0	0

GOALS AND ACTUAL NEW CLUBS CUMULATIVE



GOALS AND ACTUAL MEMBERS CUMULATIVE



DROPPED CLUBS: 1	19 CLUBS OF 58 ADDED 1 OR MORE NEW MEMBERS	<u>GENDER DISTRIBUTION</u>	
DROPPED MEMBERS		MALE	1,220 (64.52%)
DECEASED	8	FEMALE	671 (35.48%)
CLUB CANCELLED	0	Women Percentage Fiscal Year Goal: 38%	
OTHER	40	TOTAL FAMILY UNIT MEMBERS	514
TOTAL	48	FAMILY MEMBERS PAYING HALF DUES	268

[CLICK HERE FOR CUMULATIVE MEMBERSHIP DATA](#)